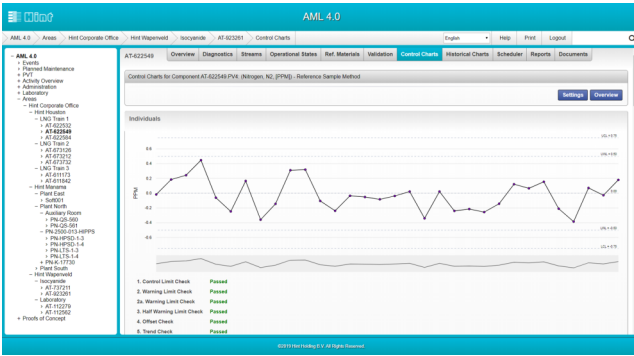


AML Analyzer Management & CEMS Integration

AML Analyzer Management (AMADAS) and AML CEMS are systems with similarities. The main goal of AML CEMS is to demonstrate environmental regulatory compliance of various industrial sources of air pollutants. CEMS generally refers to a packaged system of gas analyzers, gas sampling system, temperature, flow and opacity monitors that are integrated with a data acquisition system to continuously monitor emissions. The main goal of AML Analyzer Management is to provide maintenance personnel with a complete set of easy to use tools, to monitor, maintain and improve the health and quality of the analyzer. Both systems include a data acquisition system, partly gathering the same data. Both include analyzers, but the reason for inclusion differs.



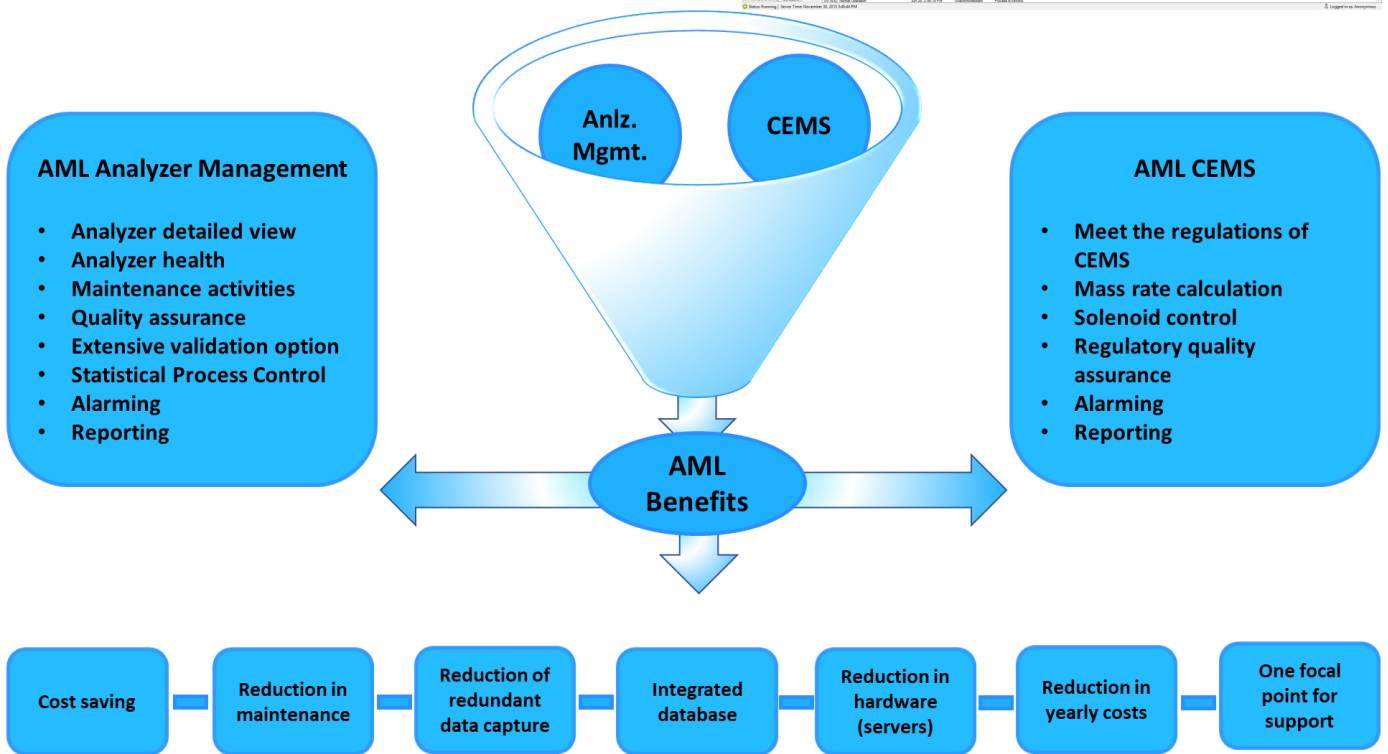
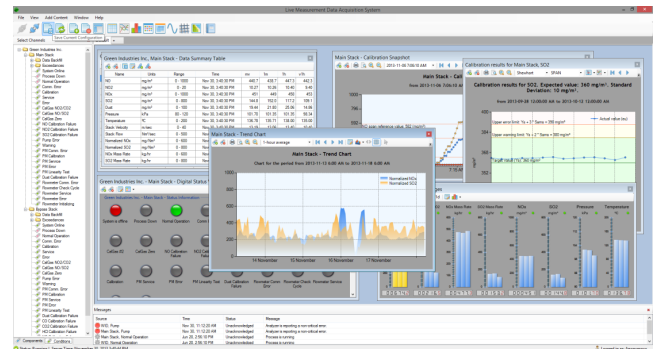
AML Analyzer Management

AML AMADAS is a system to monitor, evaluate and improve the performance of online and offline analyzers in a cost-effective manner. It automatically collects real-time data from analyzers by direct readout or via the plant control system, collects manually-entered data, interprets analyzer performance and provides guidance for maintenance. AML Analyzer Management can be used in the periodic validation process of critical process measurements, such as fiscal metering points and safety related measurements.

AML Analyzer Management is about is sensor data quality, Condition based maintenance, trust & confidence level, uncertainty thus Quality.

AML CEMS

AML CEMS is a system to collect, store, visualize, and report industrial process-related data from a variety of sources. The emissions are monitored to comply with governmental regulations. The system is capable to monitor various processes on an intermittent or continuous basis. This is accomplished through the integrated data management platform that can be used for visual-



Improve efficiency through **Human Interest** in **New Technology**

E. info@hint-global.com I. www.hint-global.com

